

**photinus Schréder**  
Experts in lightability™

# FLAMINIA

ENG	INSTALLATION INSTRUCTIONS	ITA	ISTRUZIONI DI INSTALLAZIONE	NLD	INSTALLATIE INSTRUCTIES	DAN	INSTALLATIONSVEJLEDNING	HUN	TELEPÍTÉSI ÚTMUTATÓ
DEU	INSTALLATIONSANLEITUNG	POL	INSTRUKCJE MONTAŻU	RUS	Инструкции по установке	RON	INSTRUCȚIUNI DE INSTALARE	CHI	安装说明
FRA	INSTRUCTIONS DE MONTAGE	SPA	INSTRUCCIONES DE INSTALACIÓN	POR	INSTRUÇÕES DE INSTALAÇÃO	SWE	INSTALLATIONSANVISNING	UKR	Інструкції з монтажу
SRP	UPUTSTVA ZA INSTALACIJU	AR	تعليمات التركيب						



**IP**  
65

**IK**  
06

Control gear must be SELV/PELV!  
 $U_{out\ max}=120V$

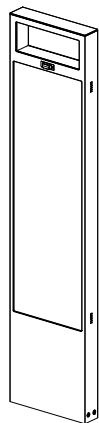


12-24VDC

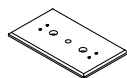


ALL THE TIGHTENING TORQUES VALUES ARE GIVEN FOR ASSEMBLIES WITHOUT THE ADDITION OF A GREASE DECREASING FRICTION.

## PARTS LIST



1x



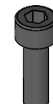
1x



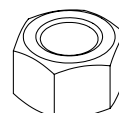
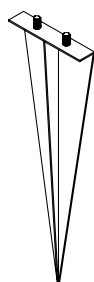
2x



4x

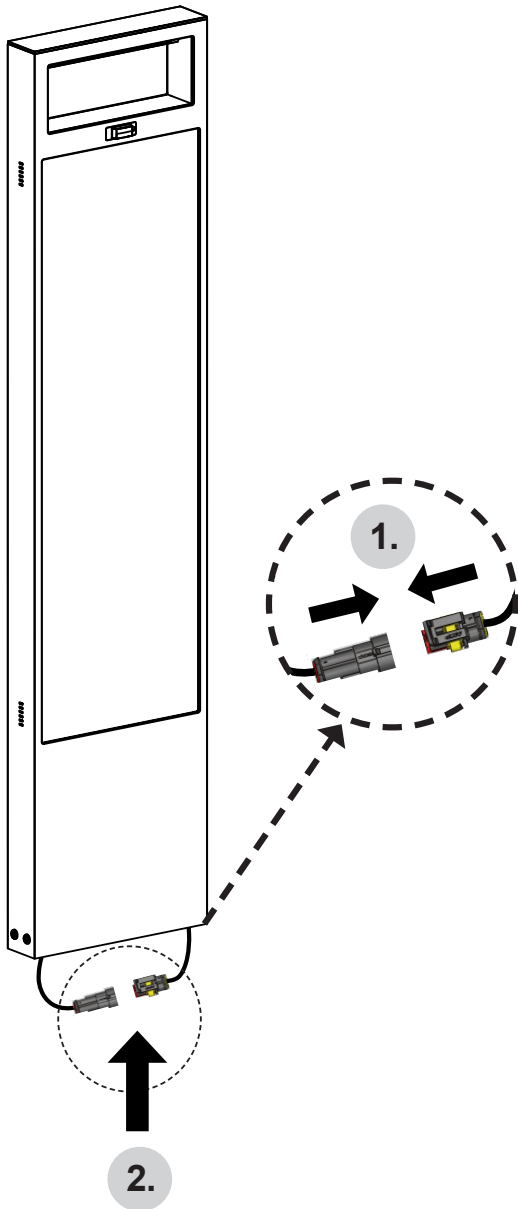


4x

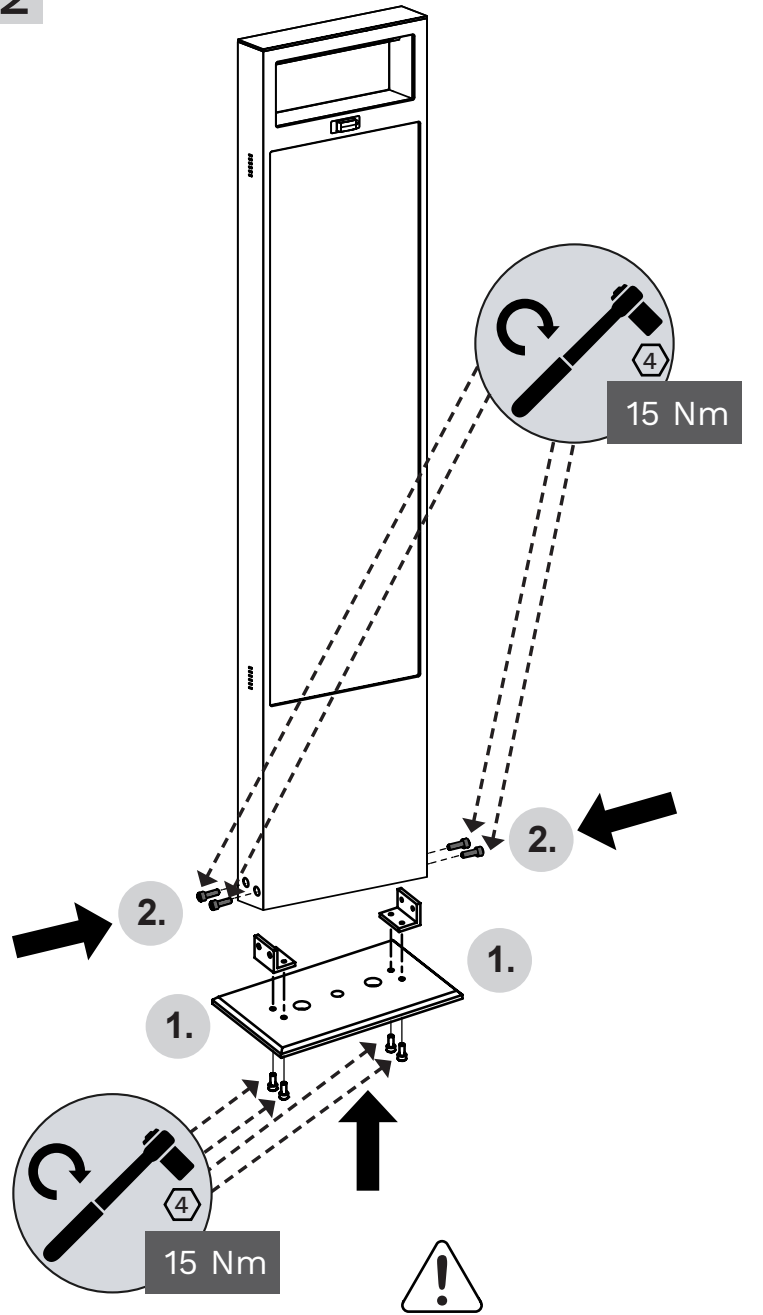


# INSTALLATION STEPS

1



2

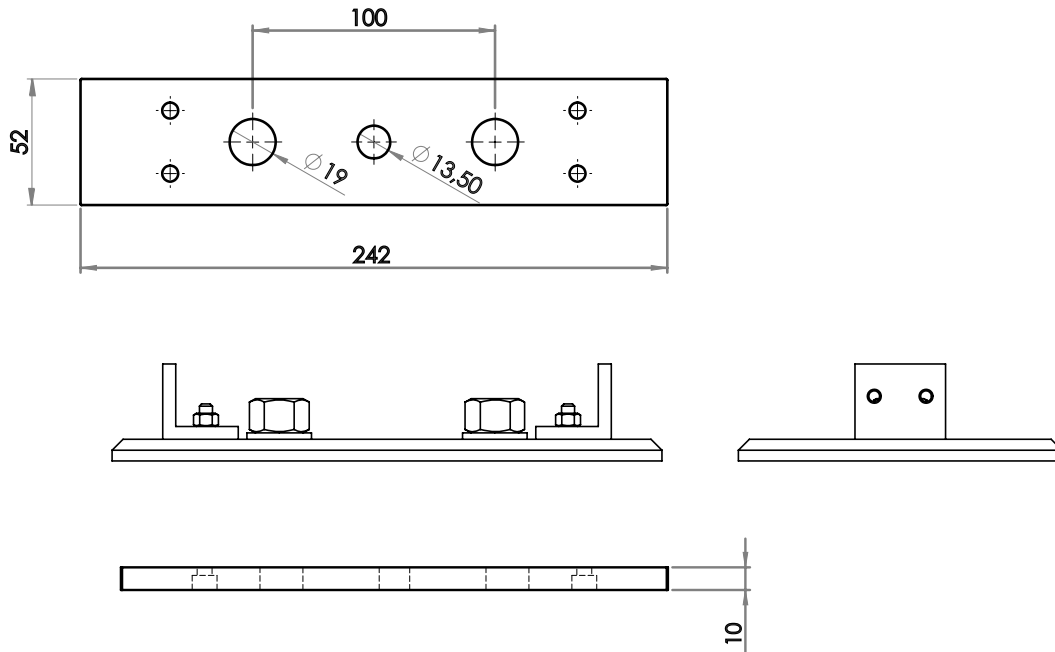


Pay attention to use the correct screw for installation.

# MOUNTING OPTION 1 - CONCRETE FOUNDATION

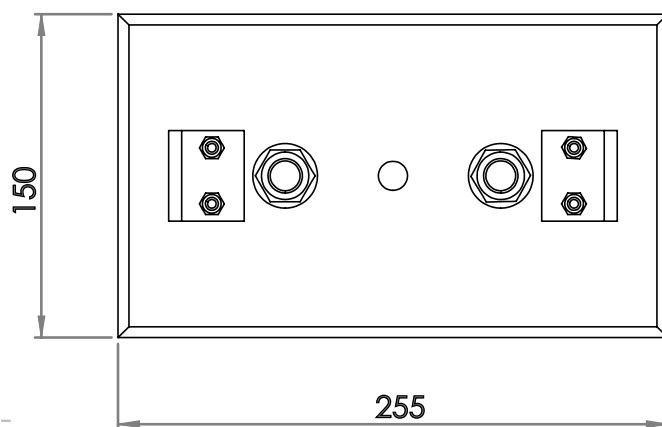
## AS

### Anchor Base Small



## AL

### Anchor Base Large



# MOUNTING OPTION 2 - MOUNTING WEDGE

